

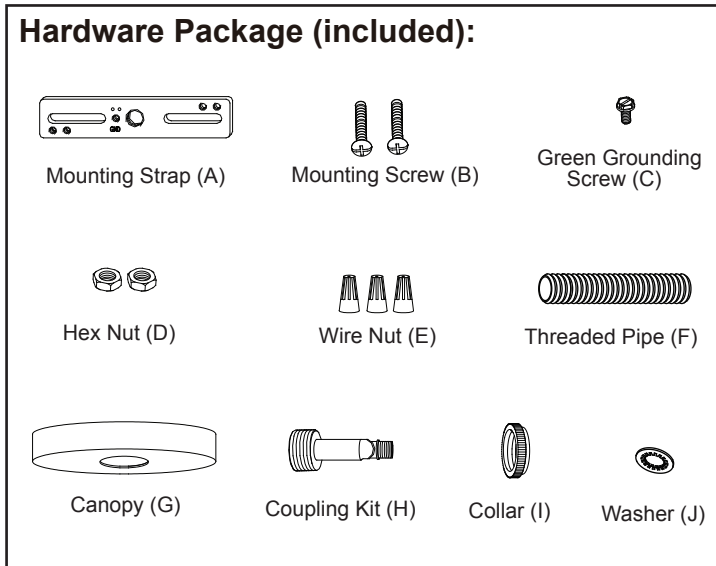
ASSEMBLY AND INSTALLATION INSTRUCTIONS

H0119 / H0120

WARNING: TO AVOID RISK OF ELECTRICAL SHOCK, BE SURE TO SHUT OFF POWER WHILE INSTALLING OR SERVICING THIS FIXTURE.

NOTES: 1. Before installing, consult local electrical codes for wiring and grounding requirements.
2. READ AND SAVE THESE INSTRUCTIONS.

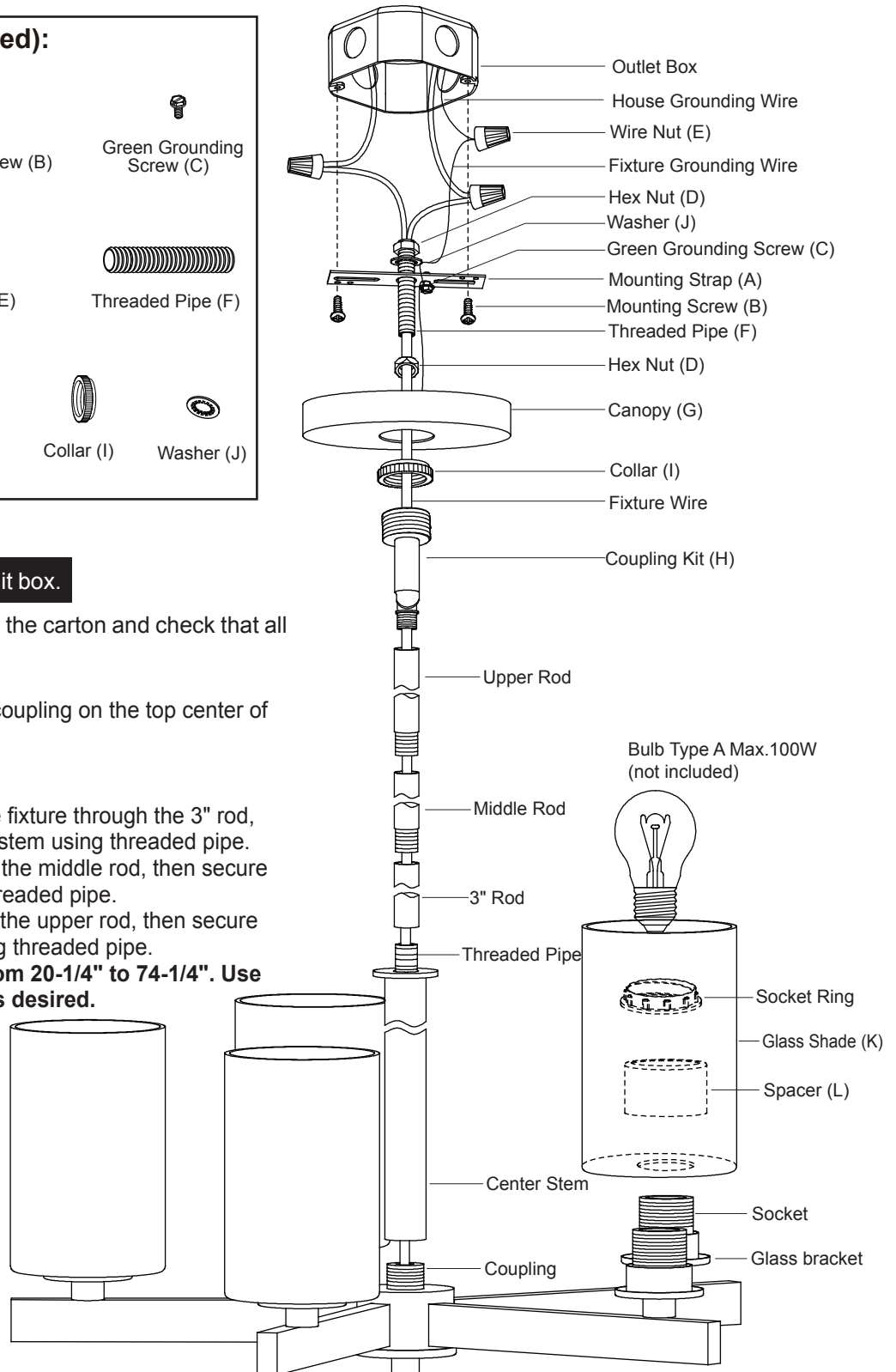
Hardware Package (included):



Assembly Instructions:

Turn off the power at fuse or circuit box.

- Carefully remove the fixture from the carton and check that all parts are included.
- Thread the center stem onto the coupling on the top center of the fixture
- Rod Connections:
 - Thread the fixture wire from the fixture through the 3" rod, then secure 3" rod onto center stem using threaded pipe.
 - Thread the fixture wire through the middle rod, then secure middle rod onto 3" rod using threaded pipe.
 - Thread the fixture wire through the upper rod, then secure upper rod onto middle rod using threaded pipe.
"NOTE: Length adjustable from 20-1/4" to 74-1/4". Use fewer rods if shorter length is desired.
- Thread the fixture wire through the coupling kit, collar, canopy, then secure the rod assembly to the coupling kit.
- Thread the fixture wire through the hex nut, threaded pipe and mounting strap. Install the hex nut onto one end of the threaded pipe leaving about 3/8" (10mm) thread exposed. Install same end of threaded pipe by screwing into coupling kit, secure threaded pipe by tightening hex nut.



6. Attach the threaded pipe to the mounting strap, then secure it with a washer and hex nut.
7. Attach the mounting strap to outlet box by using two mounting screws.
8. Pull out the source wires from the outlet box. Make wire connections using wire nuts as follows:
 - Connect the smooth-coated wire (marked) from the fixture to the hot wire (usually black insulation) from the power source.
 - Connect the ribbed-coated wire (unmarked) from the fixture to the neutral wire (usually white insulation) from the power source.
 - Attach the fixture grounding wire (usually bare wire) to the mounting strap with the green grounding screw. Then connect it to the house grounding wire with a wire nut. If your outlet box does not have a house grounding wire, then wrap the fixture grounding wire around the green grounding screw.
 Carefully put the wires back into the outlet box.

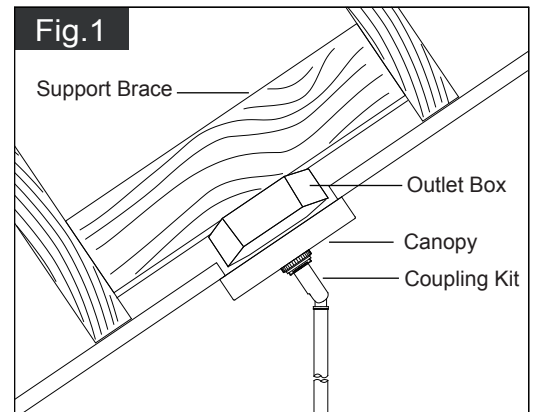
9. Attach the canopy to the mounting strap: insert the coupling kit through hole, then secure by tightening collar.

10. Place the glass shades onto the glass brackets, then secure them by tightening the spacers and socket rings.

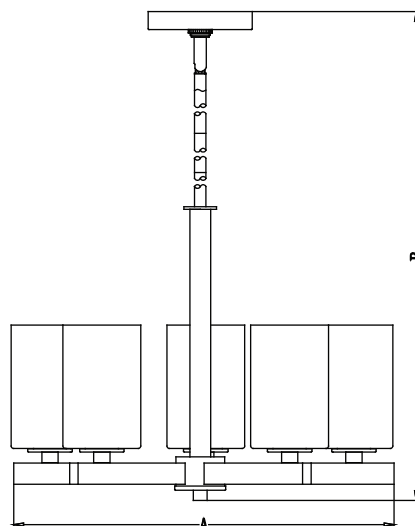
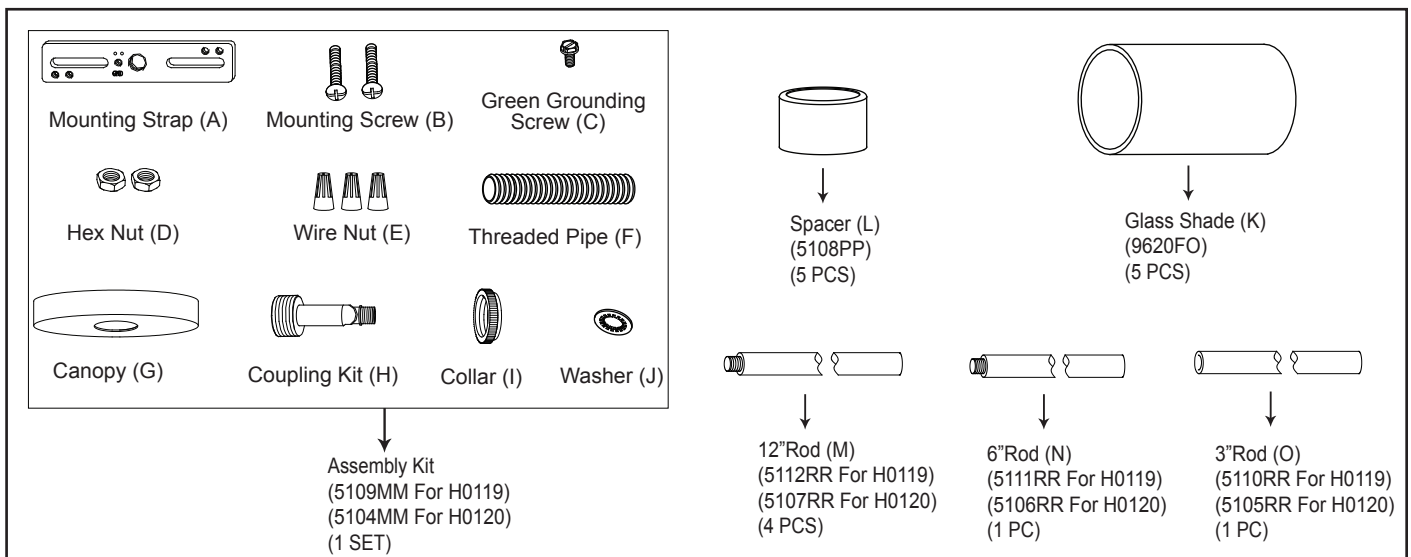
11. Install bulbs (not included). See relamping label at socket area or packaging for maximum allowed wattage.

12. Angled mounting recommended for a vaulted or angled ceiling. (See Fig. 1)

Turn on the power at the main fuse or circuit breaker box.



The following parts are available for re-order if damaged or missing.



A: 19-1/4"

B: 20-1/4~74-1/4"